

# Bronkema Feedlots V2

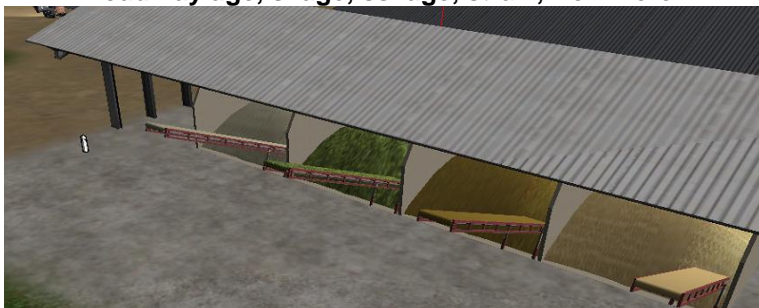
The Bronkema Feedlots V2 is generally the same map as V1. However, the farm on this map is now a Beef Farm. You can still raise your calves and move them to the feedlot. You can still purchase up to 1000 cows at the store!! You have the same crops. The info spots or "bouncing i"s" can still be seen throughout the map. Since this map has Beef cows instead of Dairy cows, there is no Dairy and milk can't be picked up, however cows can still be purchased so there is still milk. The milktruck on this map, is now used like a feed truck. It starts at the Co-Op and drives across the road to the feedbins at the first feedlot. And then back to the Co-Op. So it looks like it drives to the feedbin to fill it, just like when an actual Feedtruck comes to the farm with a load of feed. But in the game, it drives to the bins and the milk is picked up.

[Bronkema Mods Pack is required to play this map.](#)

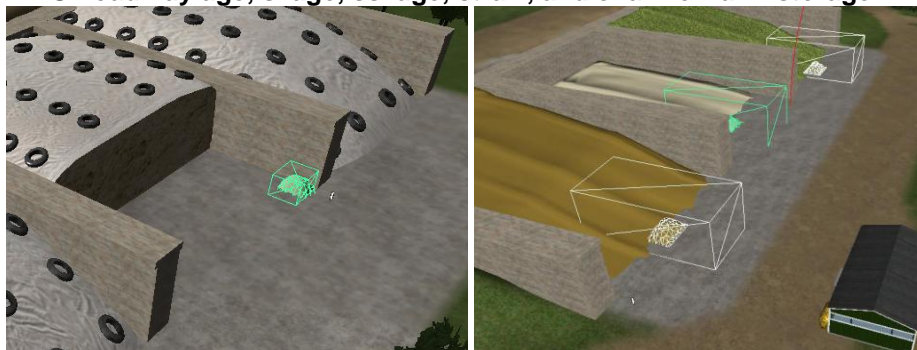
## Feeding

Like in V1, you can dump grass in the bunks at any of the feedlots and haylage, silage, ssilage, and straw. That can all be dumped at any of the bunker silos as well. As indicated by the bouncing "i"s. To load your trailers with haylage, silage, ssilage, straw-with a trailer that accepts those for-drive under the belt of what you want to load at the loading station.

**Load haylage, silage, ssilage, straw, from here.**

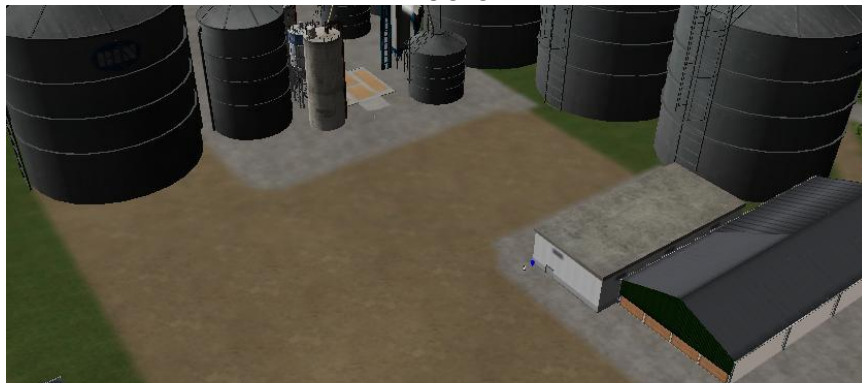


**Unload haylage, silage, ssilage, straw, and chaff for farm storage.**



## Sell Points

THE CO-OP

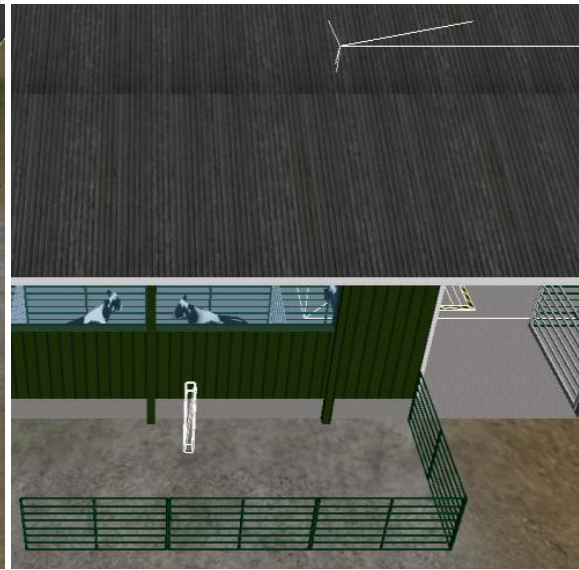
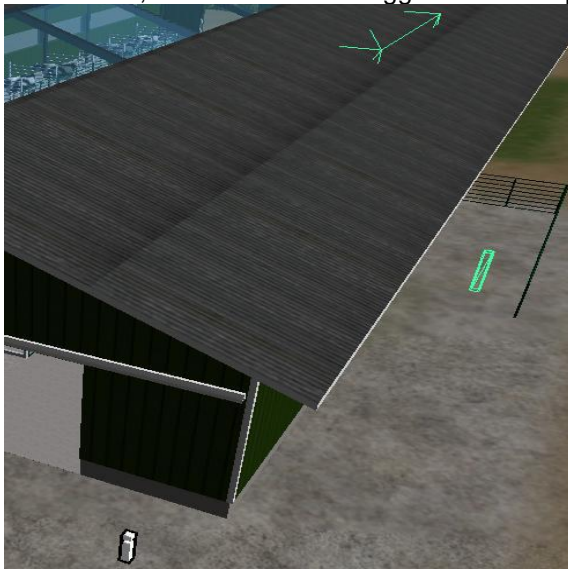


THE PORT

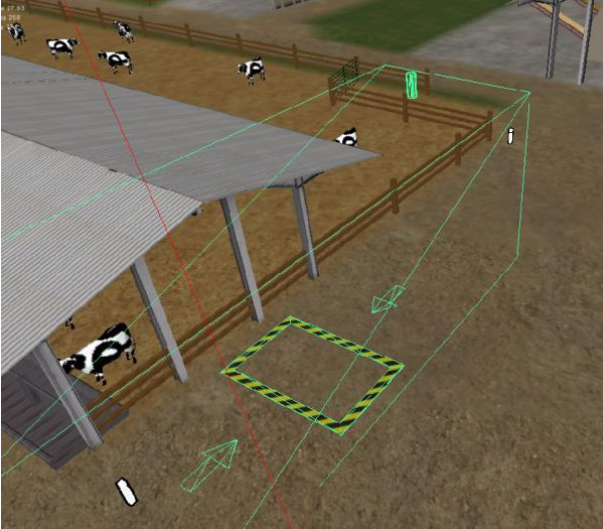


## COWS and CALVES

To get calves, with straw and clover, drive in the door of the calf shed-first picture- and unload inside, to feed your pregnant cows. After your calves are born, move them to the closest feedlot. To load your calves, back your cattle trailer alongside the Calf Shed, where the calf fill trigger is-second picture.



Then take your load of calves to the closest Feedlot. Unload calves and silage there-first picture below-to raise your calves. After your calves are grown into cows, load them into your cattle trailer-second picture below.





# MANURE/LIQUIDMANURE

Now, if you decide to purchase the full 1000 cows, I suggest spreading manure quite often! Drive under the Houle manure pipe by the blue slurry store to load your liquidmanure tanker with LiquidManure. To load manure drive your tractor/spreader under the manure belt or a loader tractor or Telehandler with a loader bucket can be used to load manure. Then drive out to a field and start spreading.



## Images

Here are the images of the new crops that are planted on this map.



Here are the images of what is transported on this map.



# Hidden Lake

## Moonshiners at Hidden Lake

**Dump corn  
and maize here  
for a NICE profit**

## MODS

The updated Bronkema Mod Pack is required for this map.

